



Safe or Share

Read the **All About Me Cards**. Discuss them in your group.

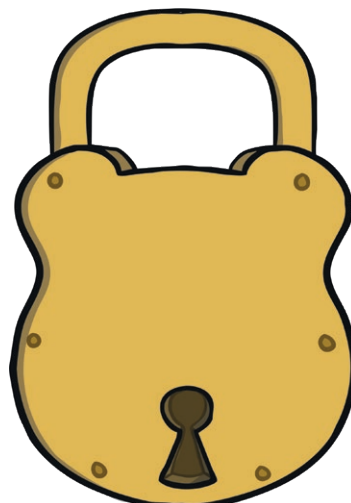
If the information on the card is OK to share, place the card on the **Share** box.

If the information on the card needs to be kept safe, place the card on the **Safe** box.

Share



Safe





Safe or Share

Read the **All About Me Cards**. Discuss them with your partner.

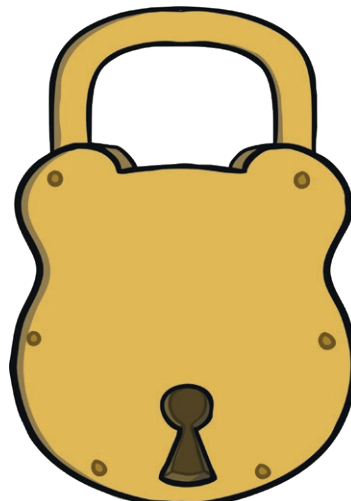
If the information on the card is OK to share, place the card on the **Share** box.

If the information on the card needs to be kept safe, place the card on the **Safe** box.

Share



Safe





Safe or Share

With a partner, order the **All About Me Cards** from 1 to 6. 1 is the piece of information that is most OK to share and 6 is the information that it is most important to keep safe.

1

**Ok to
share**



2

3



Safe or Share

4

5

6

**Keep
it safe**

