



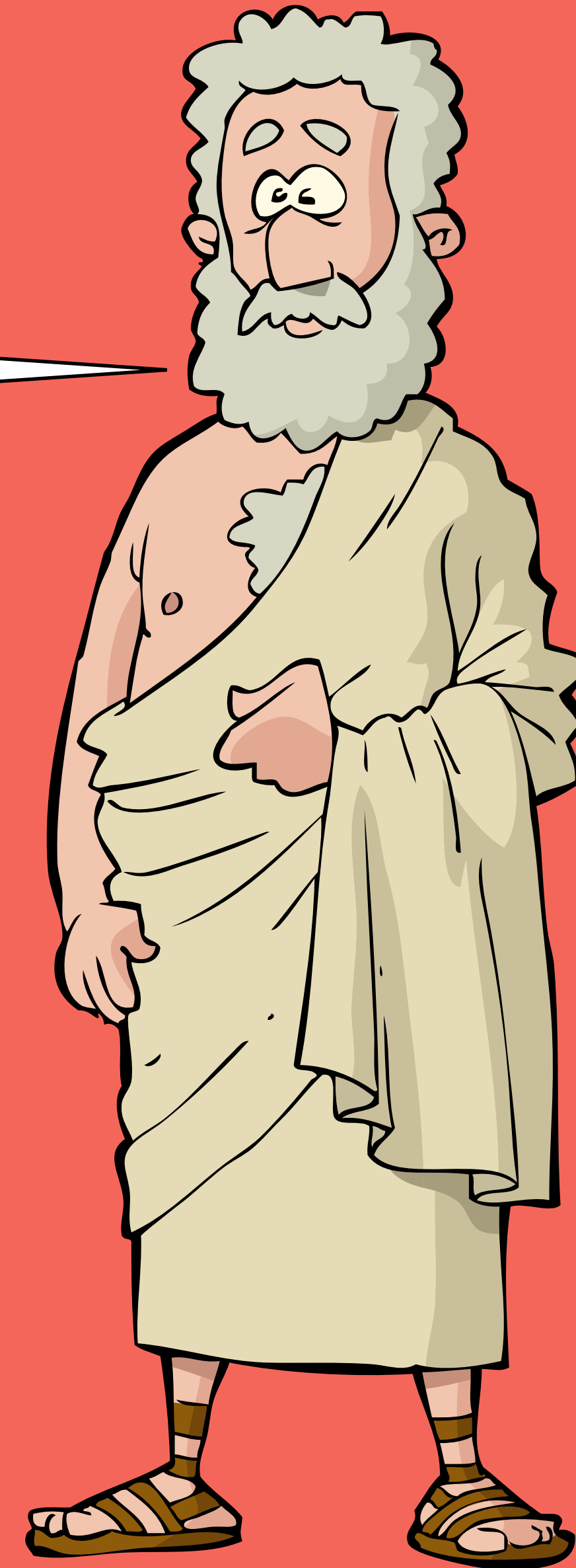
The Romans

Learning Objective:

To explore the legend of how Rome was founded and investigate how it grew into the Roman Empire.

What do you already know about the city of ancient Rome?

Think, pair, share your ideas.



What ideas did you come up with?



What we know about ancient Rome:

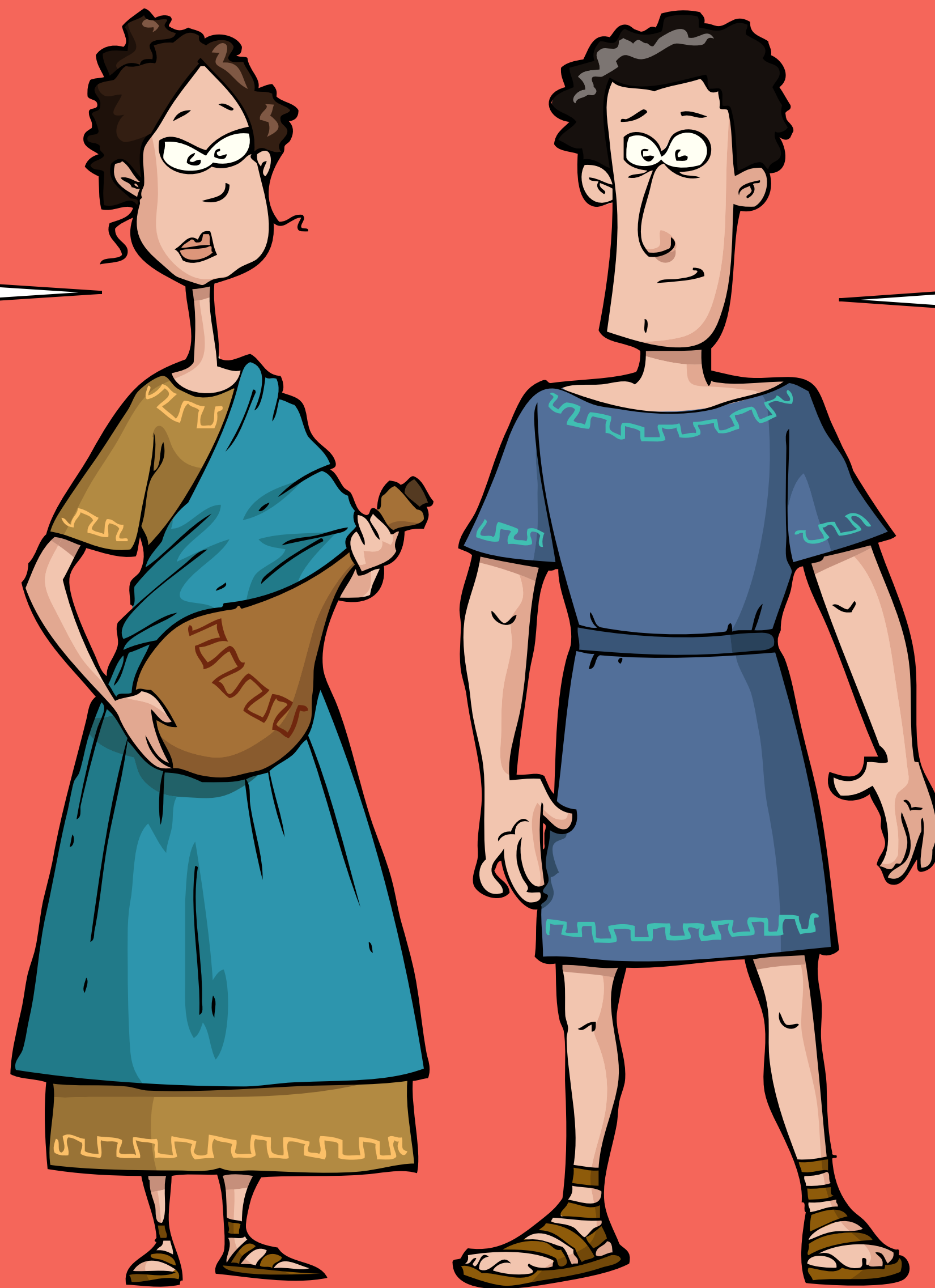
The story of Romulus and Remus

Romulus and Remus were the twin sons of Mars (the god of war) and Princess Rhea. Rhea knew that other gods wanted to harm the twins so she put them in a basket and sent them down the River Tiber. She was sure someone would find them and keep them safe.

Sure enough, a she-wolf found Romulus and Remus and fed them with her own milk. Soon after that, a shepherd found the twins and adopted them. When Romulus and Remus were older they decided they didn't want to be ordinary shepherds. They wanted to be kings so they decided to build a city on the spot where the wolf had found them. However, they quarreled about who should be the king and had a fight. Romulus killed Remus, made himself king and named the city after himself.



Do you think this is a true story?



Which parts of the story do you think could be true?



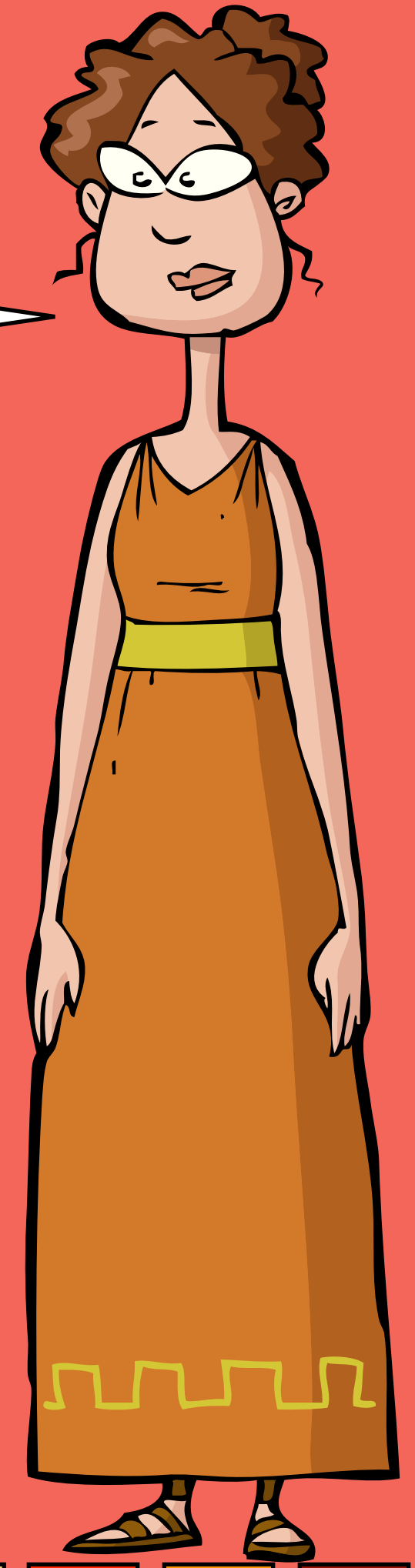
How did Rome grow from a city to an empire?

The story of Romulus and Remus is a good story but probably not very accurate. No one is entirely sure how the city of Rome was first founded. It is claimed that Rome was built in the year 753 BC. Archaeologists think that it probably originated from a small group of huts and villages and began long before this. Rome had good soil and good trade links because of its closeness to the River Tiber so it was a wealthy city. Gradually, the Romans won battles against neighbouring villages and became stronger and stronger. Because of the fact that the Romans were strong, lots of other tribes asked the Romans for protection. They agreed to be ruled by the Romans in return for military protection and the benefits of trading that the Romans could offer. In other words, it was safer and more profitable to be ruled by the Romans than it was to be their enemy.

The Roman Empire grew from one small city to cover most of Europe as well as parts of Africa and Asia. Have a look at this map showing the height of the Roman empire in 117 AD:



What do you notice about the location of the places ruled by the Romans?



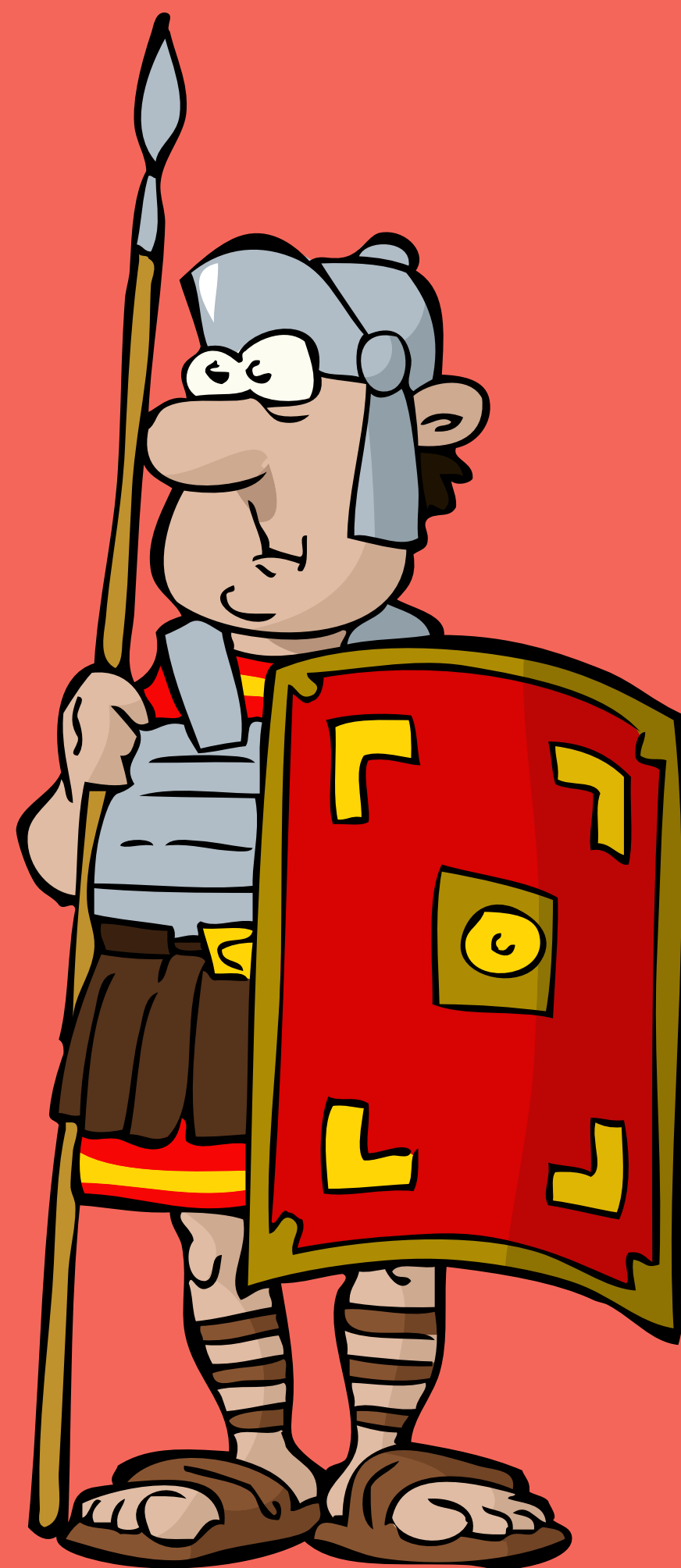
Do you think these facts about the Roman Empire are true or false?

The Roman Empire lasted for over 700 years.

The Roman Empire was ruled by an emperor.

The Romans never controlled Britain.

The Roman Empire lasted until 1453.





The Roman Empire lasted for over 700 years.

TRUE! The Roman Empire began in 753 BC and ended as a unified empire in 476 AD.

The Roman Empire was ruled by an emperor.

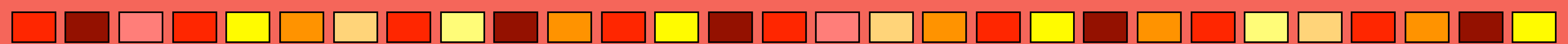
PARTLY TRUE! The first rulers of Rome were kings. Then Rome became a republic. It wasn't until 27 BC that Rome was ruled by an emperor.

The Romans never controlled Britain.

FALSE! The Romans conquered Britain in 43 AD.

The Roman Empire lasted until 1453.

PARTLY TRUE! In 395 AD the Empire was split into the Western and Eastern empires. The Western Empire ended in 476 but the Eastern Empire continued until 1453.



◀ BACK

NEXT ▶